



Demographic and Income Comparison Profile

Burlington Center
Rings: 3, 5, 10 mile radii

Latitude: 40.03927
Longitude: -74.82751

	3 miles	5 miles	10 miles
Census 2010 Summary			
Population	46,441	127,320	521,726
Households	16,328	47,093	196,320
Families	12,068	33,214	136,096
Average Household Size	2.79	2.67	2.61
Owner Occupied Housing Units	13,412	36,243	145,770
Renter Occupied Housing Units	2,916	10,850	50,550
Median Age	39.9	40.1	40.0
2014 Summary			
Population	45,832	126,840	520,540
Households	16,147	47,136	196,932
Families	11,911	33,138	135,907
Average Household Size	2.79	2.66	2.59
Owner Occupied Housing Units	13,044	35,528	143,168
Renter Occupied Housing Units	3,103	11,607	53,764
Median Age	40.8	41.0	40.7
Median Household Income	\$75,637	\$65,606	\$66,153
Average Household Income	\$87,932	\$82,522	\$84,672
2019 Summary			
Population	45,666	127,277	522,662
Households	16,081	47,367	198,131
Families	11,846	33,230	136,304
Average Household Size	2.79	2.65	2.59
Owner Occupied Housing Units	12,976	35,665	143,792
Renter Occupied Housing Units	3,105	11,702	54,339
Median Age	41.2	41.5	41.2
Median Household Income	\$82,736	\$76,374	\$77,683
Average Household Income	\$100,663	\$94,244	\$97,916
Trends: 2014-2019 Annual Rate			
Population	-0.07%	0.07%	0.08%
Households	-0.08%	0.10%	0.12%
Families	-0.11%	0.06%	0.06%
Owner Households	-0.10%	0.08%	0.09%
Median Household Income	1.81%	3.09%	3.27%

Source: U.S. Census Bureau, Census 2010 Summary File 1. Esri forecasts for 2014 and 2019.



Demographic and Income Comparison Profile

Burlington Center
Rings: 3, 5, 10 mile radii

Latitude: 40.03927
Longitude: -74.82751

2014 Households by Income	3 miles		5 miles		10 miles	
	Number	Percent	Number	Percent	Number	Percent
<\$15,000	1,048	6.5%	3,587	7.6%	15,219	7.7%
\$15,000 - \$24,999	958	5.9%	3,455	7.3%	14,642	7.4%
\$25,000 - \$34,999	1,256	7.8%	4,182	8.9%	16,998	8.6%
\$35,000 - \$49,999	2,080	12.9%	6,505	13.8%	25,790	13.1%
\$50,000 - \$74,999	2,637	16.3%	8,275	17.6%	35,579	18.1%
\$75,000 - \$99,999	2,671	16.5%	7,015	14.9%	30,216	15.3%
\$100,000 - \$149,999	3,613	22.4%	9,098	19.3%	35,804	18.2%
\$150,000 - \$199,999	1,261	7.8%	3,233	6.9%	13,300	6.8%
\$200,000+	623	3.9%	1,788	3.8%	9,384	4.8%
Median Household Income	\$75,637		\$65,606		\$66,153	
Average Household Income	\$87,932		\$82,522		\$84,672	
Per Capita Income	\$31,296		\$30,807		\$32,246	

2019 Households by Income	3 miles		5 miles		10 miles	
	Number	Percent	Number	Percent	Number	Percent
<\$15,000	920	5.7%	3,257	6.9%	13,527	6.8%
\$15,000 - \$24,999	714	4.4%	2,660	5.6%	10,622	5.4%
\$25,000 - \$34,999	784	4.9%	2,778	5.9%	12,111	6.1%
\$35,000 - \$49,999	1,944	12.1%	6,204	13.1%	24,133	12.2%
\$50,000 - \$74,999	2,551	15.9%	8,185	17.3%	33,620	17.0%
\$75,000 - \$99,999	2,927	18.2%	7,947	16.8%	34,819	17.6%
\$100,000 - \$149,999	3,749	23.3%	9,770	20.6%	39,120	19.7%
\$150,000 - \$199,999	1,578	9.8%	4,095	8.6%	17,335	8.7%
\$200,000+	914	5.7%	2,472	5.2%	12,844	6.5%
Median Household Income	\$82,736		\$76,374		\$77,683	
Average Household Income	\$100,663		\$94,244		\$97,916	
Per Capita Income	\$35,852		\$35,252		\$37,382	

Data Note: Income is expressed in current dollars.

Source: U.S. Census Bureau, Census 2010 Summary File 1. Esri forecasts for 2014 and 2019.



Demographic and Income Comparison Profile

Burlington Center
Rings: 3, 5, 10 mile radii

Latitude: 40.03927
Longitude: -74.82751

2010 Population by Age	3 miles		5 miles		10 miles	
	Number	Percent	Number	Percent	Number	Percent
Age 0 - 4	2,830	6.1%	7,714	6.1%	30,766	5.9%
Age 5 - 9	3,156	6.8%	8,042	6.3%	31,709	6.1%
Age 10 - 14	3,390	7.3%	8,713	6.8%	33,669	6.5%
Age 15 - 19	3,431	7.4%	8,984	7.1%	34,697	6.7%
Age 20 - 24	2,533	5.5%	7,185	5.6%	31,363	6.0%
Age 25 - 34	4,841	10.4%	14,557	11.4%	65,177	12.5%
Age 35 - 44	6,770	14.6%	17,542	13.8%	71,060	13.6%
Age 45 - 54	7,848	16.9%	20,897	16.4%	84,933	16.3%
Age 55 - 64	5,465	11.8%	15,474	12.2%	64,356	12.3%
Age 65 - 74	3,157	6.8%	9,345	7.3%	37,908	7.3%
Age 75 - 84	2,062	4.4%	6,433	5.1%	25,959	5.0%
Age 85+	959	2.1%	2,434	1.9%	10,131	1.9%

2014 Population by Age	3 miles		5 miles		10 miles	
	Number	Percent	Number	Percent	Number	Percent
Age 0 - 4	2,646	5.8%	7,261	5.7%	28,946	5.6%
Age 5 - 9	2,964	6.5%	7,898	6.2%	31,217	6.0%
Age 10 - 14	3,217	7.0%	8,243	6.5%	32,382	6.2%
Age 15 - 19	3,013	6.6%	7,955	6.3%	31,680	6.1%
Age 20 - 24	2,770	6.0%	7,728	6.1%	31,704	6.1%
Age 25 - 34	5,167	11.3%	15,309	12.1%	67,752	13.0%
Age 35 - 44	5,870	12.8%	15,843	12.5%	65,931	12.7%
Age 45 - 54	7,368	16.1%	19,401	15.3%	78,192	15.0%
Age 55 - 64	6,123	13.4%	17,151	13.5%	71,085	13.7%
Age 65 - 74	3,560	7.8%	10,824	8.5%	44,268	8.5%
Age 75 - 84	2,098	4.6%	6,426	5.1%	25,705	4.9%
Age 85+	1,033	2.3%	2,801	2.2%	11,677	2.2%

2019 Population by Age	3 miles		5 miles		10 miles	
	Number	Percent	Number	Percent	Number	Percent
Age 0 - 4	2,626	5.8%	7,242	5.7%	29,097	5.6%
Age 5 - 9	2,882	6.3%	7,711	6.1%	30,490	5.8%
Age 10 - 14	3,198	7.0%	8,392	6.6%	32,782	6.3%
Age 15 - 19	2,881	6.3%	7,566	5.9%	30,544	5.8%
Age 20 - 24	2,331	5.1%	6,581	5.2%	27,714	5.3%
Age 25 - 34	5,573	12.2%	16,021	12.6%	67,962	13.0%
Age 35 - 44	5,489	12.0%	15,563	12.2%	67,084	12.8%
Age 45 - 54	6,617	14.5%	17,357	13.6%	70,108	13.4%
Age 55 - 64	6,635	14.5%	18,361	14.4%	75,176	14.4%
Age 65 - 74	4,168	9.1%	12,637	9.9%	51,522	9.9%
Age 75 - 84	2,202	4.8%	6,847	5.4%	27,675	5.3%
Age 85+	1,064	2.3%	3,000	2.4%	12,506	2.4%

Source: U.S. Census Bureau, Census 2010 Summary File 1. Esri forecasts for 2014 and 2019.



Demographic and Income Comparison Profile

Burlington Center
Rings: 3, 5, 10 mile radii

Latitude: 40.03927
Longitude: -74.82751

2010 Race and Ethnicity	3 miles		5 miles		10 miles	
	Number	Percent	Number	Percent	Number	Percent
White Alone	22,082	47.5%	70,100	55.1%	389,469	74.7%
Black Alone	18,997	40.9%	43,374	34.1%	78,812	15.1%
American Indian Alone	117	0.3%	324	0.3%	1,279	0.2%
Asian Alone	2,182	4.7%	4,816	3.8%	24,918	4.8%
Pacific Islander Alone	20	0.0%	42	0.0%	168	0.0%
Some Other Race Alone	1,239	2.7%	3,805	3.0%	12,683	2.4%
Two or More Races	1,805	3.9%	4,859	3.8%	14,396	2.8%
Hispanic Origin (Any Race)	3,762	8.1%	10,797	8.5%	34,479	6.6%

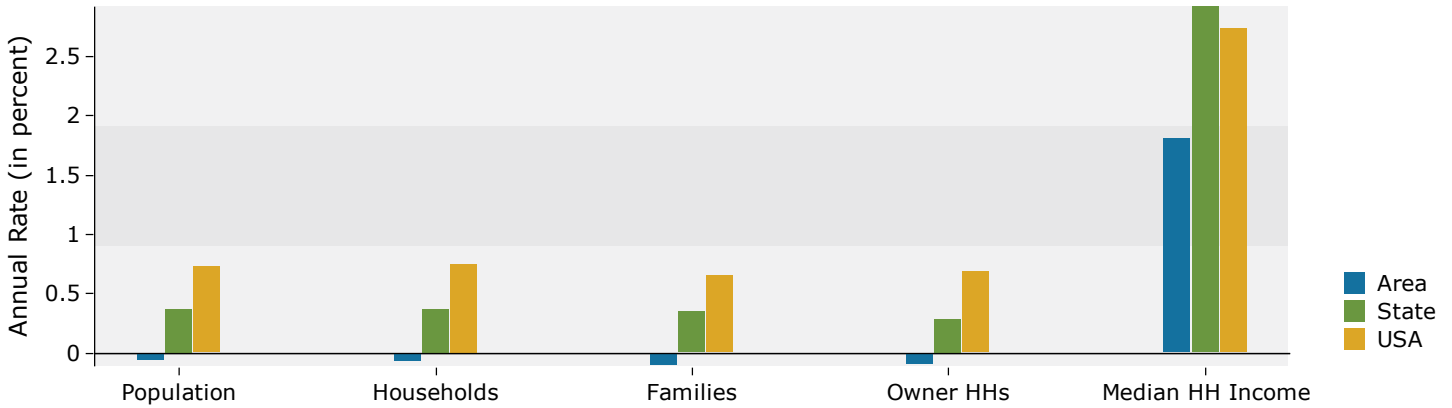
2014 Race and Ethnicity	3 miles		5 miles		10 miles	
	Number	Percent	Number	Percent	Number	Percent
White Alone	21,257	46.4%	68,259	53.8%	380,749	73.1%
Black Alone	18,705	40.8%	43,248	34.1%	79,889	15.3%
American Indian Alone	131	0.3%	364	0.3%	1,363	0.3%
Asian Alone	2,407	5.3%	5,370	4.2%	28,070	5.4%
Pacific Islander Alone	19	0.0%	41	0.0%	168	0.0%
Some Other Race Alone	1,382	3.0%	4,309	3.4%	14,450	2.8%
Two or More Races	1,931	4.2%	5,249	4.1%	15,850	3.0%
Hispanic Origin (Any Race)	4,264	9.3%	12,358	9.7%	39,846	7.7%

2019 Race and Ethnicity	3 miles		5 miles		10 miles	
	Number	Percent	Number	Percent	Number	Percent
White Alone	20,389	44.6%	66,204	52.0%	371,524	71.1%
Black Alone	18,625	40.8%	43,503	34.2%	81,684	15.6%
American Indian Alone	150	0.3%	412	0.3%	1,457	0.3%
Asian Alone	2,758	6.0%	6,217	4.9%	32,769	6.3%
Pacific Islander Alone	19	0.0%	42	0.0%	172	0.0%
Some Other Race Alone	1,590	3.5%	5,032	4.0%	17,003	3.3%
Two or More Races	2,137	4.7%	5,867	4.6%	18,053	3.5%
Hispanic Origin (Any Race)	5,013	11.0%	14,677	11.5%	47,862	9.2%

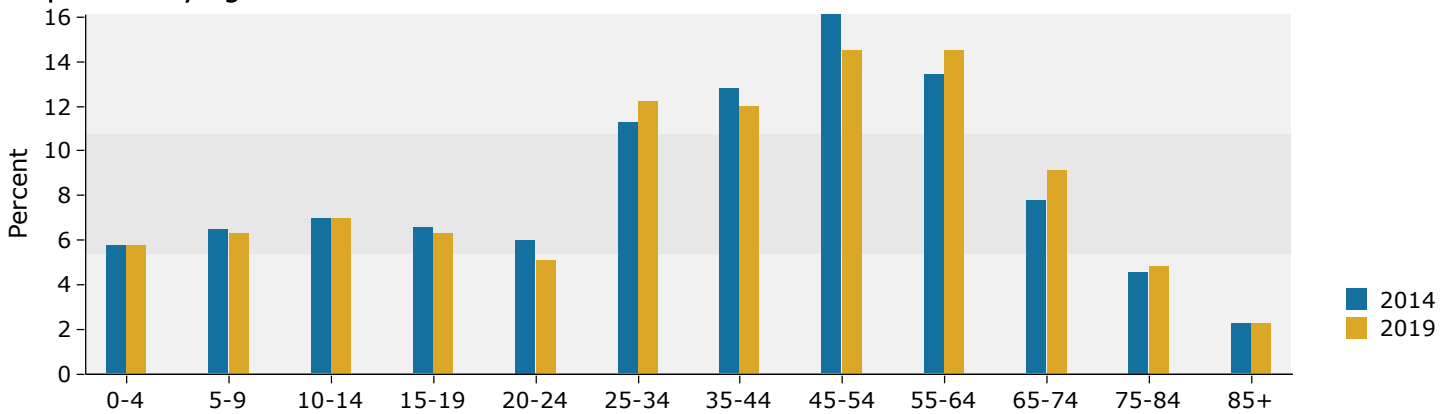
Source: U.S. Census Bureau, Census 2010 Summary File 1. Esri forecasts for 2014 and 2019.

3 miles

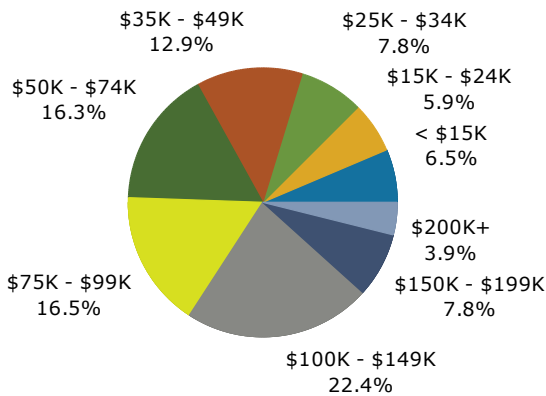
Trends 2014-2019



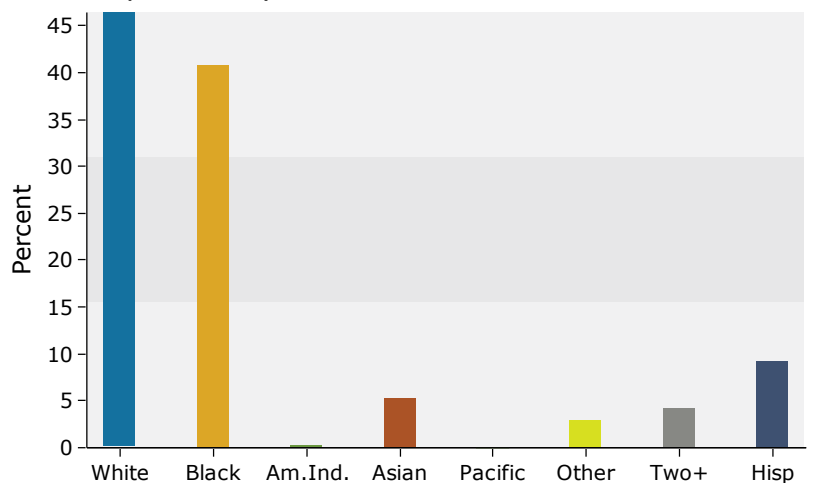
Population by Age



2014 Household Income



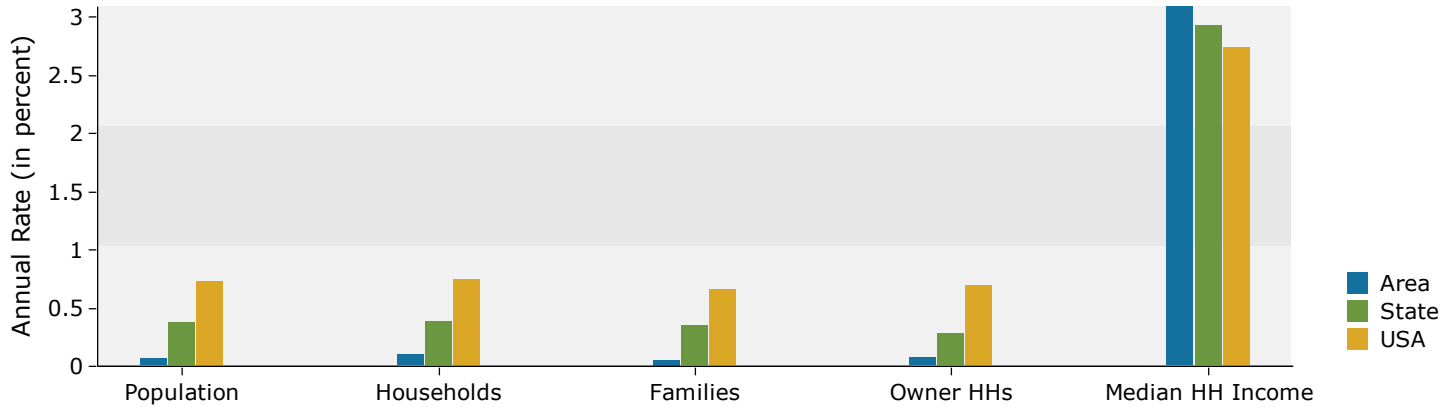
2014 Population by Race



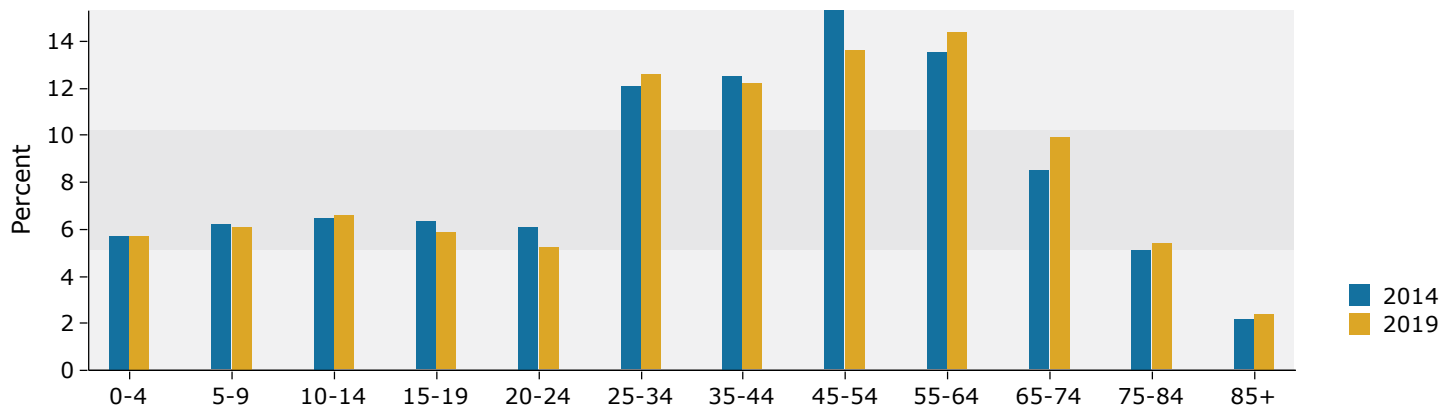
Source: U.S. Census Bureau, Census 2010 Summary File 1. Esri forecasts for 2014 and 2019.

5 miles

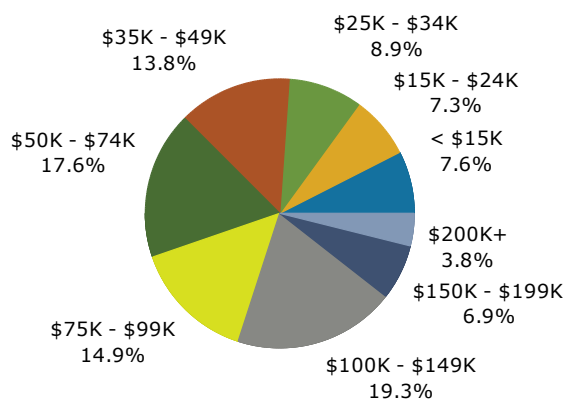
Trends 2014-2019



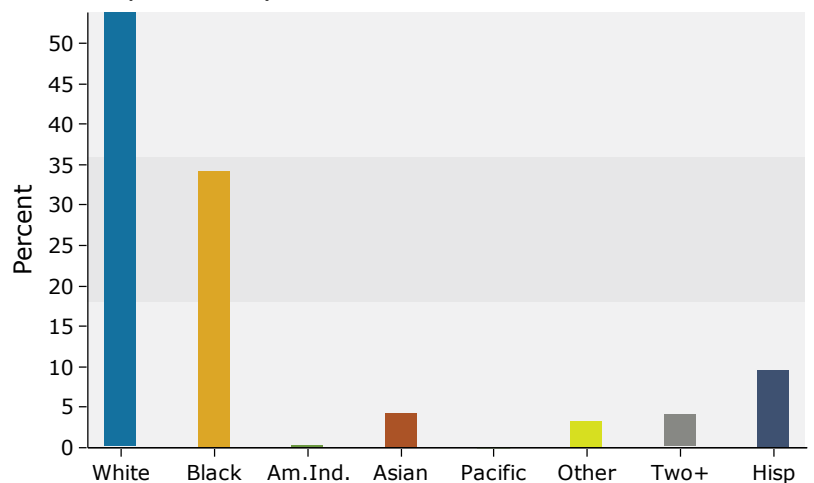
Population by Age



2014 Household Income



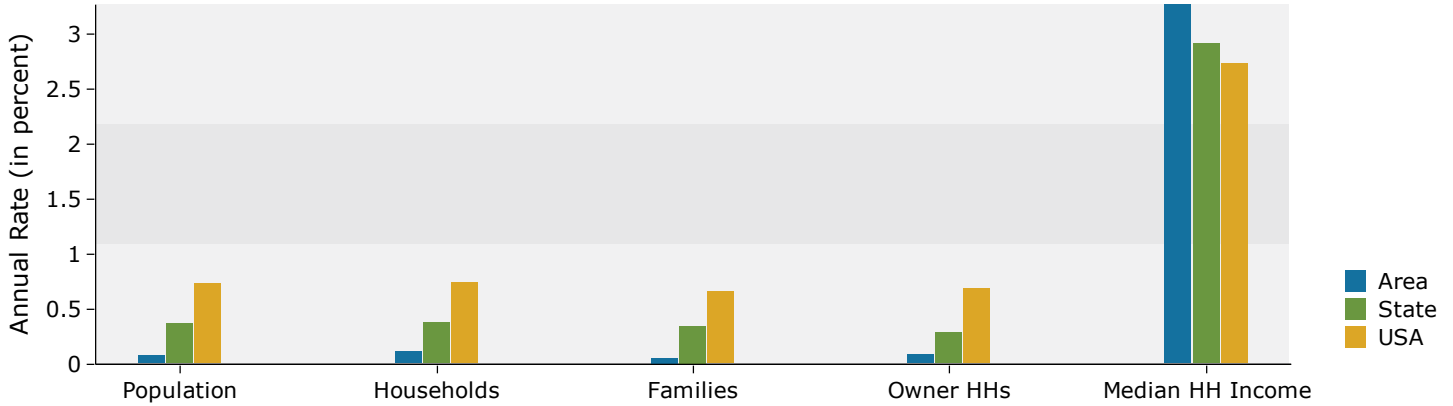
2014 Population by Race



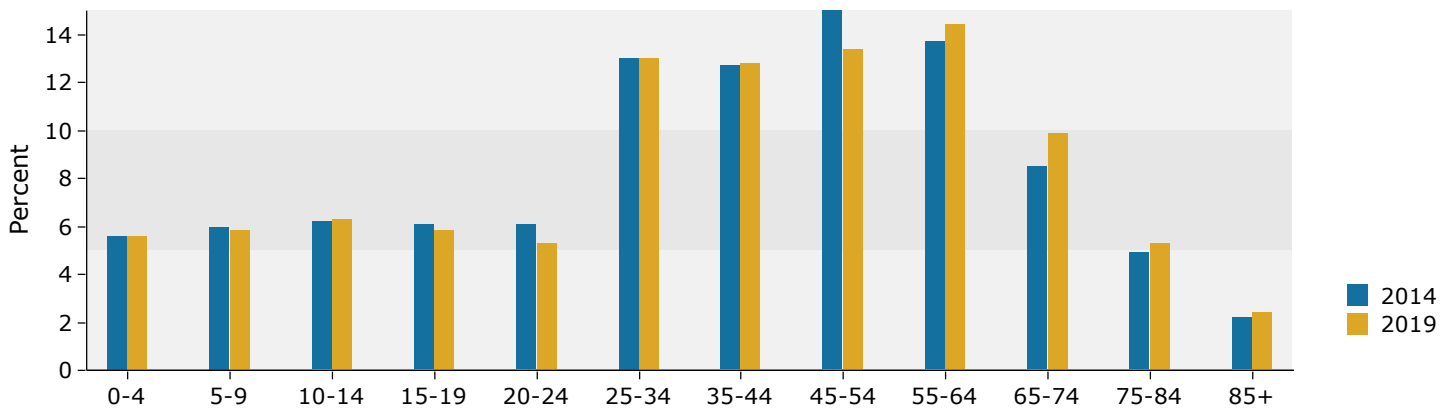
Source: U.S. Census Bureau, Census 2010 Summary File 1. Esri forecasts for 2014 and 2019.

10 miles

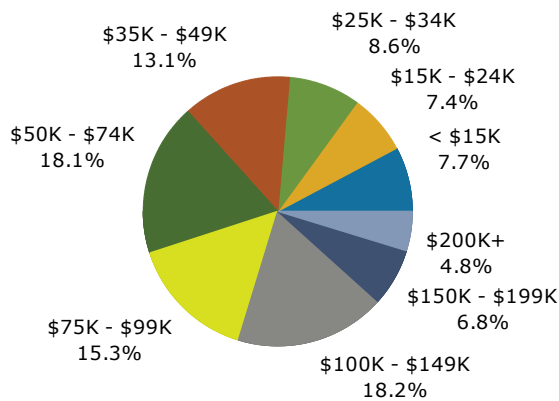
Trends 2014-2019



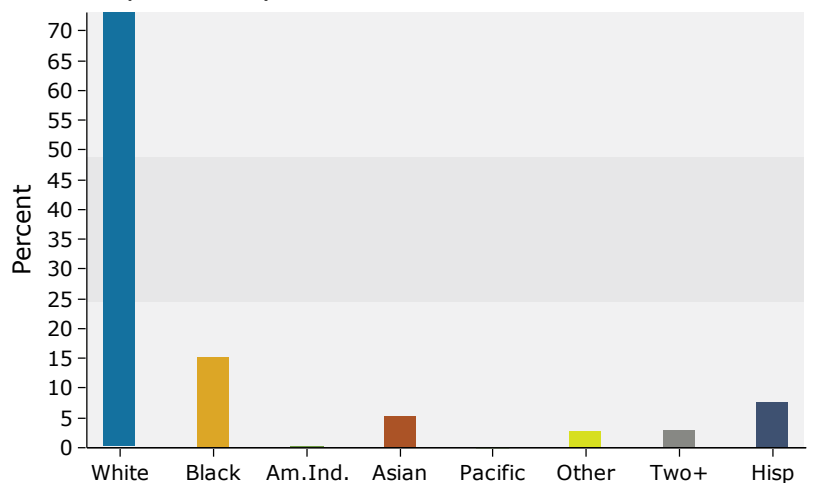
Population by Age



2014 Household Income



2014 Population by Race



Source: U.S. Census Bureau, Census 2010 Summary File 1. Esri forecasts for 2014 and 2019.